



A presentation by the Sherman Park Community Association

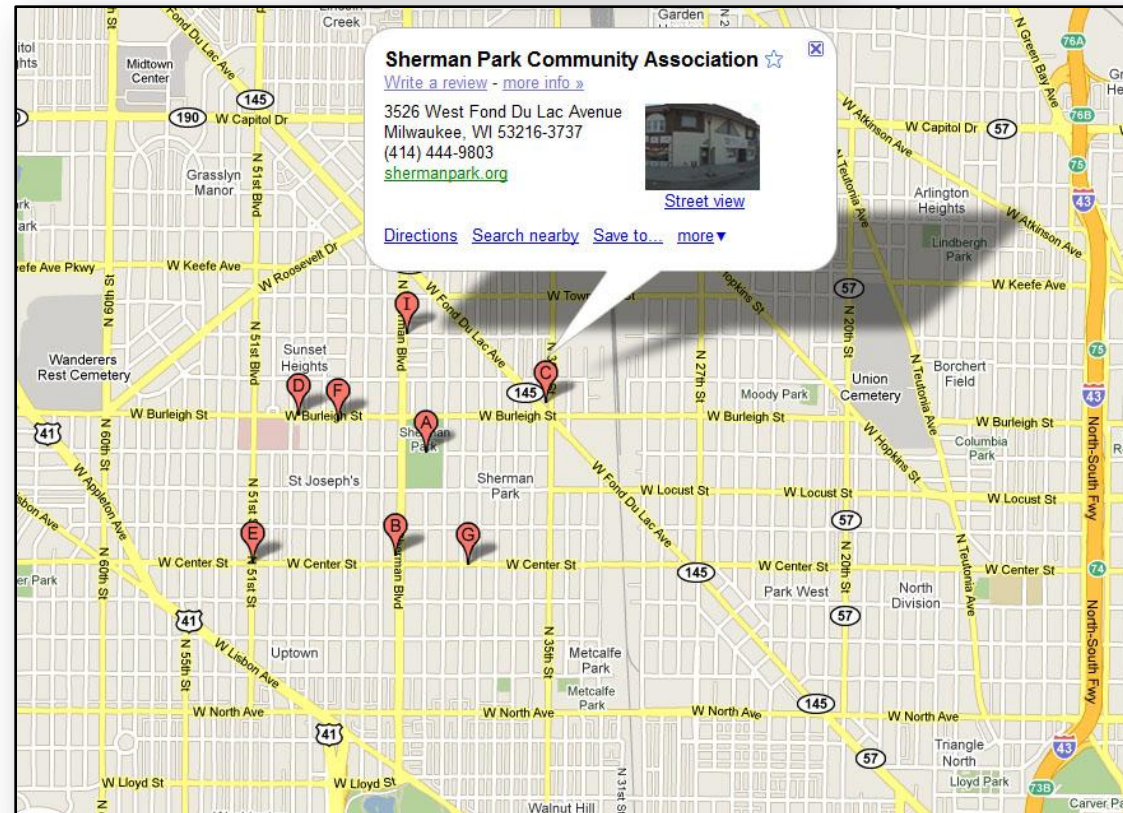
# Historic Sherman Park Neighborhood



# Location



- Size: A composite of communities, 4 miles square
  - 30<sup>th</sup> Street Industrial Corridor to 60th Street
  - Capitol Drive to North Avenue
- Less Metcalf Park - now defined separately



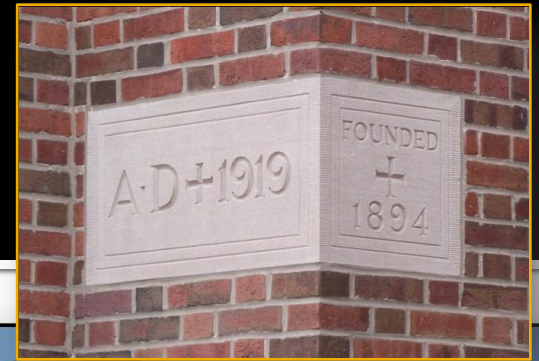
# The Park

- Located at Sherman & Burleigh
- 4 Blocks Square (Purchased in 1891 while well outside the city)



# Important Sites

- St. Anne's (Founded 1894, 36th and Wright)
- Development Began around it



# A.O. Smith Corporation: 1910

- 30<sup>th</sup> Street Industrial Corridor



Research and Engineering Building

# AO Smith



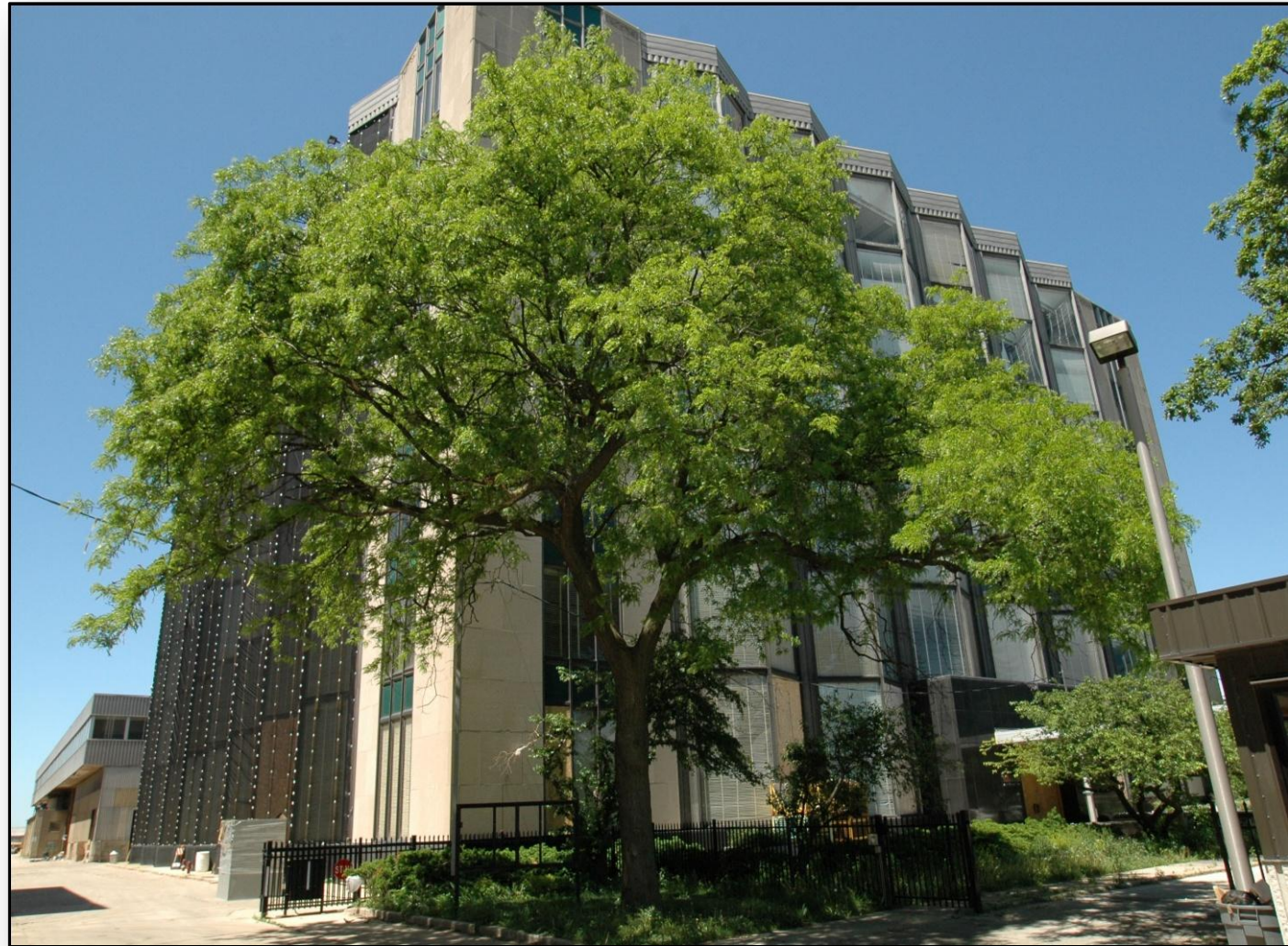
- International Style
- Designed in 1929 by Holabird & Root



# AO Smith



- Photo Shows Current Status
- Mothballed



# Schools

Washington High School 1913: 2500 N. Sherman  
Boulevard





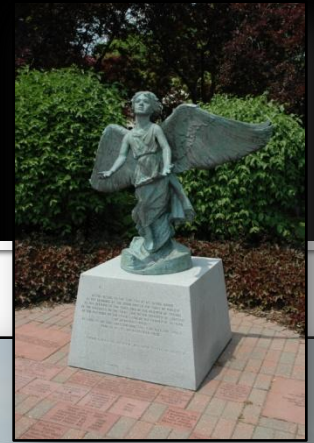
# Schools

## Jackie Robinson School: Adaptive Reuse



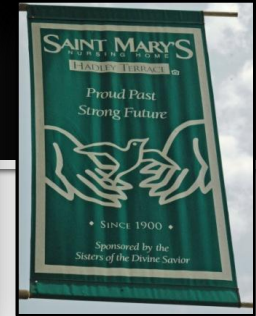
# Sites

- St. Joseph's Hospital (1929, 5000 West Chambers Street)



# Sites

St. Mary's Convent: 35<sup>th</sup>  
and Center



# Grant Boulevard

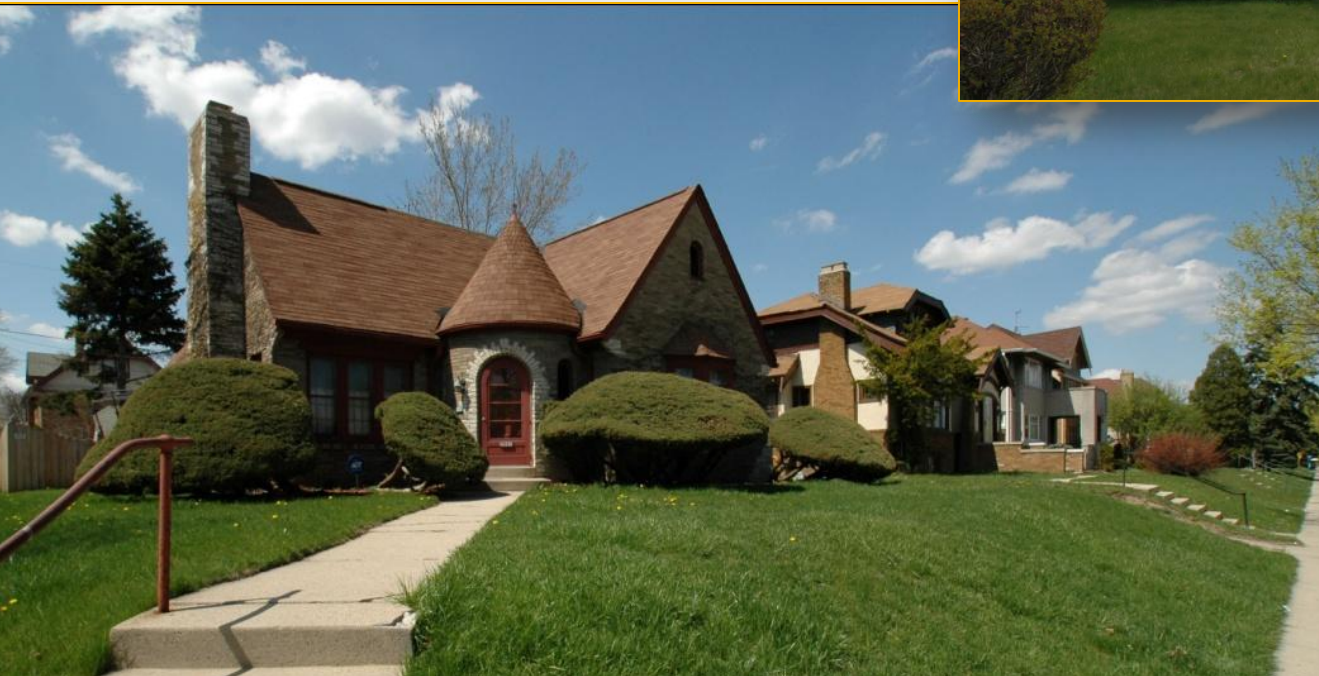
- Located between North Avenue and Locust Street
- Local, National Register District



# Sherman Boulevard



- Between W. Lloyd Street to Fond Du Lac Avenue
- Local, National Register District



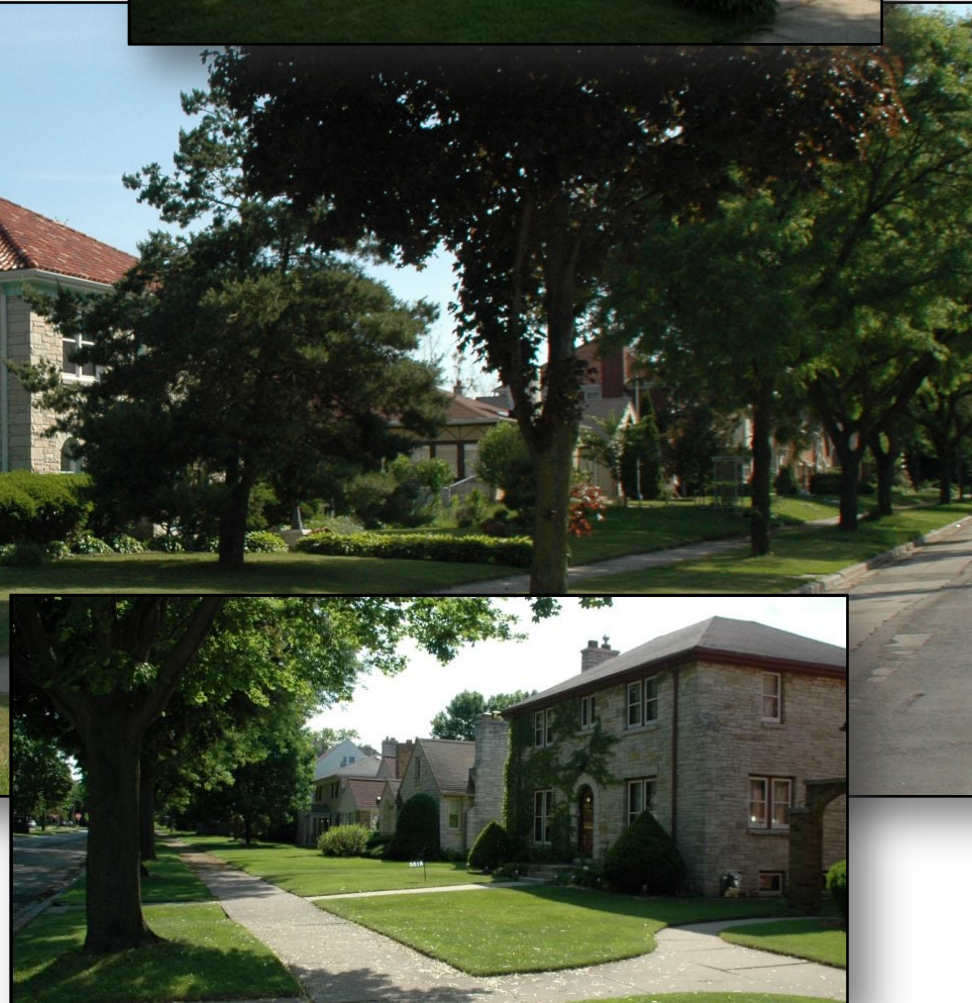
# Sherman Blvd



# 51<sup>st</sup> Boulevard

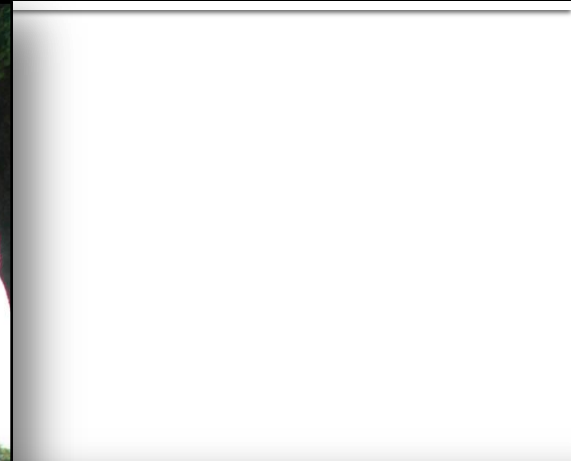


# Roosevelt Drive



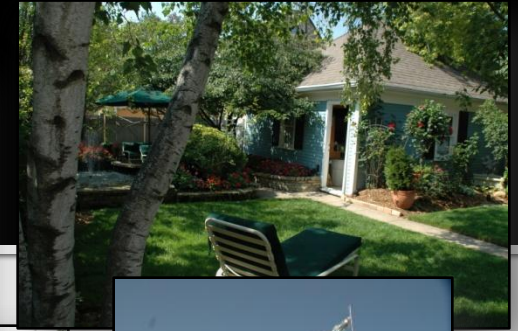


# Roosevelt Dr



# Designed For...

- Professionals
- Managers
- Middle Class People
- Demanded a Suburban Setting Near the City



# Historic Site

Denelt House: Locally Designated Site



# Historic Site

Locally Designated Site

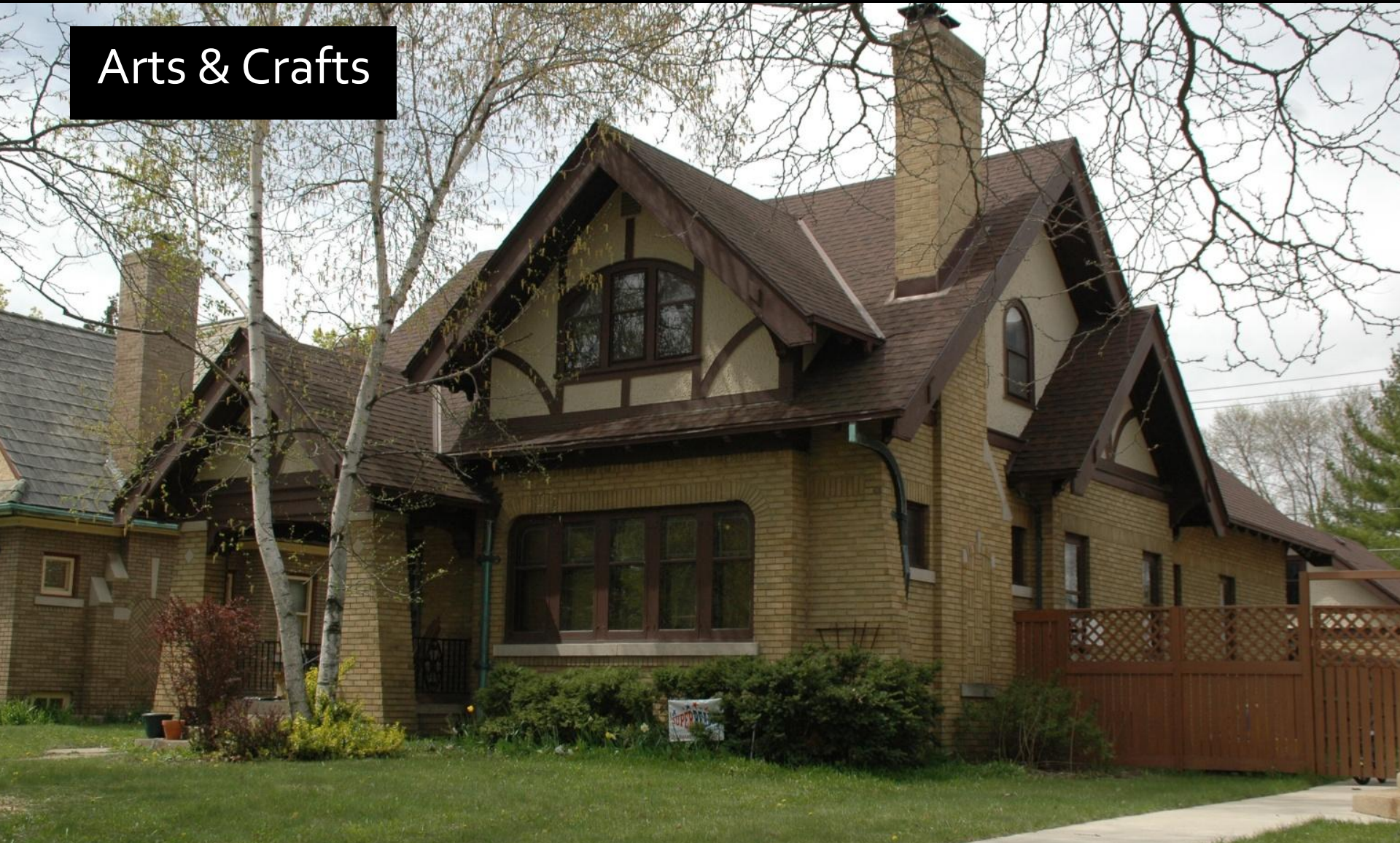


# 47th St. Bungalow District: Locally Designated



# Historic Styles

Arts & Crafts



# Styles



Prairie Influenced

# Styles

Period Revival





# Styles

## 1933 Home Show Model Home: International Style



# Styles

Cape Cod



# Styles

## Ranch



# Styles

## Lustron Homes



# Styles

## Modern Infill



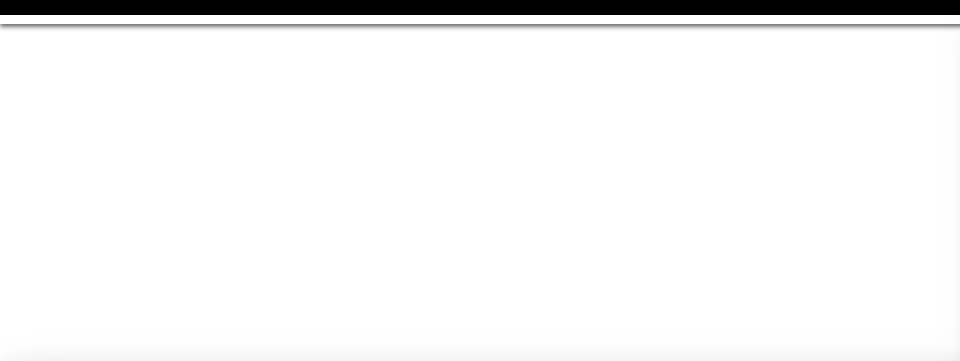
# Bungalows



# Bungalows

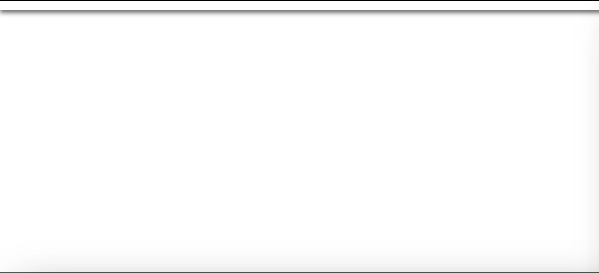


# Duplexes





# Side by Side Duplex



# Super Duplex



# Quality Housing



# Quality Housing



# Quality Housing



# Quality Housing



# Quality Housing



# Quality Housing





# Houses of Worship



# Worship



# Worship



A.D. 1949  
St. Catherine's Church  
Pope Pius XII Reigning Pontiff  
Most Rev. Moses Elias Riley Archbishop  
R. Rev. Peter K. Flasz Pastor  
✠  
William G. Herbst & Associates  
Architects



# Businesses

## Business on Lisbon

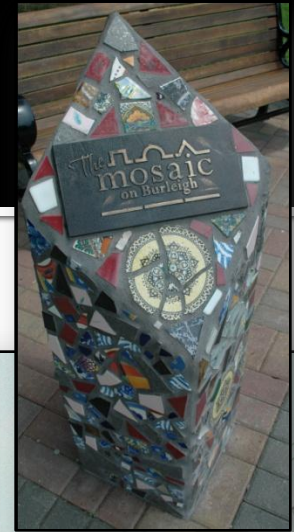


# Businesses



# Businesses

## Burleigh BID



# Businesses

Midtown Nearby



# Commitment

Police





# Residents



- Original Immigrants: Germans, Irish, English, Polish, Czech and Eastern European Jew
- Current Residents: African-American, European-Americans, Asian/Hmong-Americans, Latin-Americans and Orthodox Jewish Americans

# Residents

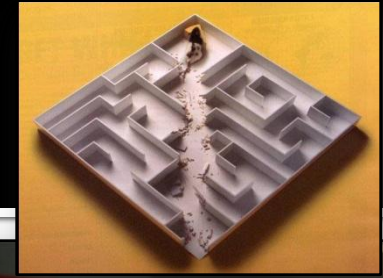


# Residents



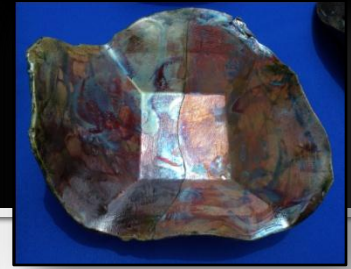
# Sherman Park Community Association (SPCA)

- Formed in 1971
- Supports
  - Block Clubs
  - Fair Housing Issues
  - Home Repair Programs
- Promotes Quality of Life



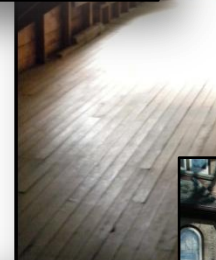
# SPCA

- Showcases
  - Local Art
  - Community Assets
- Publishes Sherman Park *Today*



# SPCA

- Conducts
  - Yearly Housing Surveys
  - Evaluates Housing Stock
  - Conducts Historic Housing Tours
  - House Improvement Clinics



# Challenges



# Challenges



Strengths	Weaknesses	Opportunities	Threats
<ol style="list-style-type: none"><li>1. Quality and Historic Housing</li><li>2. Diverse Population</li><li>3. Proximity to Downtown</li><li>4. Strong Community Organizations</li></ol>	<ol style="list-style-type: none"><li>1. Absentee Ownership</li><li>2. High Maintenance Housing</li><li>3. Renter Community Commitment</li></ol>	<ol style="list-style-type: none"><li>1. Educate Real Estate Community</li><li>2. Increase Promotion</li><li>3. In-migration to the City from Suburbs</li><li>4. Improved Perception</li></ol>	<ol style="list-style-type: none"><li>1. Poorly Advised Architectural Modification</li><li>2. Infill Incompatibility</li><li>3. Foreclosures</li><li>4. Slow Economic Recovery</li><li>5. Theft: Copper Elements and Leaded Glass</li></ol>



# Challenges

Infill



Damaged Homes

# Summary



## Questions & Comments

