



Racine COP House

Status Report on Proposal
Presented by
Dr. Tom Lifvendahl

Overview of the COP House

► Features

- Actualizes comprehensive Community Policing by fostering an intimate relationship with the community.
- Organized and run by MPD.



Overview cont'd

- Houses a wide range of community services:
 - Police Neighborhood Services
 - District Attorney
 - Corrections
 - Parole
 - Others (non-profits) based on need
- Acts as a “clearing house” for residents to interact with City services thereby fostering clear and concise communications.



Overview cont'd

► Advantages

- “One-stop shop” for Residents that houses joint partnered community groups.
- Fosters a sense of Community in neighborhoods where it had not previously existed.



Overview cont'd

- Minimal administrative responsibilities for MPD.
- Maintenance and plant administration provided by partnering Non-profit Agency.
- Allows for expansion of district facilities with minimal expense to the Department.



Overview cont'd

► Advantages

- “One-stop shop” for Residents that houses joint partnered community groups.
- Fosters a sense of Community in neighborhoods where it had not previously existed.
- Minimal administrative responsibilities for MPD.



Overview cont'd

- Maintenance and plant administration provided by partnering Non-profit Agency.
- Allows for expansion of district facilities with minimal expense to the Department.



Tours

- ▶ Three tours have been conducted in cooperation with the Racine Police Department.
- ▶ Each tour has elicited positive responses from all participants.





Alderman Murphy

Letter of Recommendation

MICHAEL J. MURPHY
ALDERMAN, 10TH DISTRICT

City Hall, Room 205
200 East Wells Street
Milwaukee, WI 53202-3570

Phone (414) 286-2221
Fax (414) 286-3456

e-mail: mmurph@milwaukee.gov
website: www.milwaukee.gov/district10



CHAIR:
Finance & Personnel Committee
Milwaukee Arts Board

MEMBER:
Judiciary & Legislation Committee
Steering & Rules Committee
Zoning, Neighborhoods & Development

April 29, 2008

Chief Edward Flynn
Milwaukee Police Department
749 W. State Street
Milwaukee, WI 53233

Dear Chief Flynn,

Recently, I accompanied Dr. Thomas A. Lifvendahl to the city of Racine in order to see their Community Oriented Policing (COP) House.

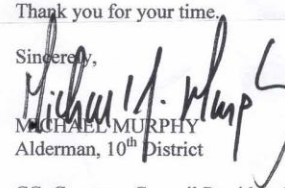
I came away from this experience very impressed by the positive impact this House is having on the city of Racine and its residents. Captain Patrick Mitchell of District 7 also had the opportunity to see this program in action, and he was equally impressed. Both of us believe that a COP House would serve the city of Milwaukee well.

I am requesting that your office give consideration to this idea. I know that Captain Mitchell will be submitting a report to you soon, if he has not already done so. After having the chance to review his report, perhaps we could all sit down and discuss how we might work to implement this in our community.

If I can be of any assistance as you look into this matter, please do not hesitate to contact me at 286-3763.

Thank you for your time.

Sincerely,


MICHAEL MURPHY
Alderman, 10th District

CC: Common Council President Willie Hines, Jr.
Captain Patrick Mitchell
Dr. Thomas Lifvendahl



Police Department

Edward A. Flynn
Chief of Police

May 12, 2008

Alderman Michael J. Murphy
10th Aldermanic District
200 E. Wells Street, Room 205
Milwaukee, WI 53202-3570

Dear Alderman Murphy:

Thank you for your correspondence expressing support for a Community Oriented Policing (COP) House. I agree that it is an interesting and promising approach to community policing.

I may consider this program in the future. Currently, however, I am going to focus on the implementation of my community-based, problem-oriented, data-driven strategy.

I appreciate your interest in public safety and willingness to investigate other models that contribute to crime reduction and look forward to further discussions at a later date.

Sincerely,

EDWARD A. FLYNN
CHIEF OF POLICE

c: Common Council President Willie L. Hines, Jr.
Acting Assistant Chief Dale T. Schunk
Captain Patrick Mitchell
Dr. Thomas Lifvendahl ✓



Chief Flynn's Response

Police Tour

- ▶ Captains
 - Pat Mitchell
 - Mike Massa
- ▶ Chief of Police
 - Kurt Wahlen



http://www.cityofracine.org/Depts/police/community_policing_houses.aspx

Parole Officers







Aldermen Hines and Puente Tour





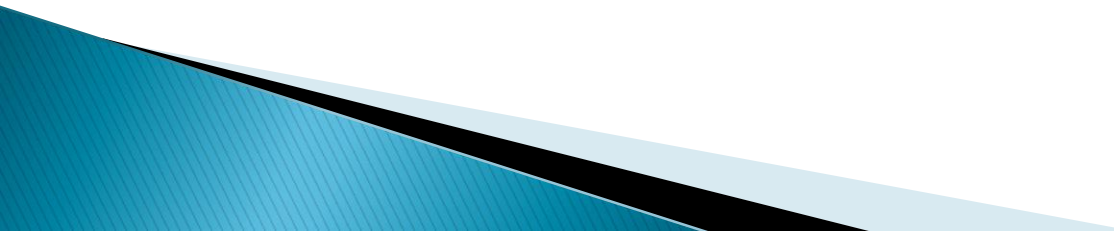








Dedication

- ▶ The following depicts the dedication of the Thelma Orr COP House.
 - ▶ This was a pre-fabricated structure built on an emptied lot.
 - ▶ Racine both rehabs and builds these facilities from the ground up.
- 

Mayor Gary Becker

Brian Anderson

Marty DeFatte

Sergeant Mark Esch

Robert Hartmann

George Huxhold

Domenick Martinelli

Mary McIlvaine

Christopher Olley

Richard Polzin

David Voss



The Racine Police Department, The
Community Outpost and Neighborhoc
Housing Services of Southeast WI, Inc.

Presents

Community Orientated Policing

Thelma Orr



Date: July 1, 2008

Time: 5:00 pm -6:30 pm



e.g., "10 market st, san francisco" or "hotels near lax"

Search Maps

[Show search options](#)

[Search the map](#)

[Find businesses](#)

[Get directions](#)

Search Results

My Maps

[Save to My Maps](#)

St. Catherine's High School

Click on the green school icon below and select "To here" in the pop up window to get detailed directions to SCHS from your location.

278 views - Public

Created on Apr 17 - Updated Apr 18

By [zpawlowski](#)

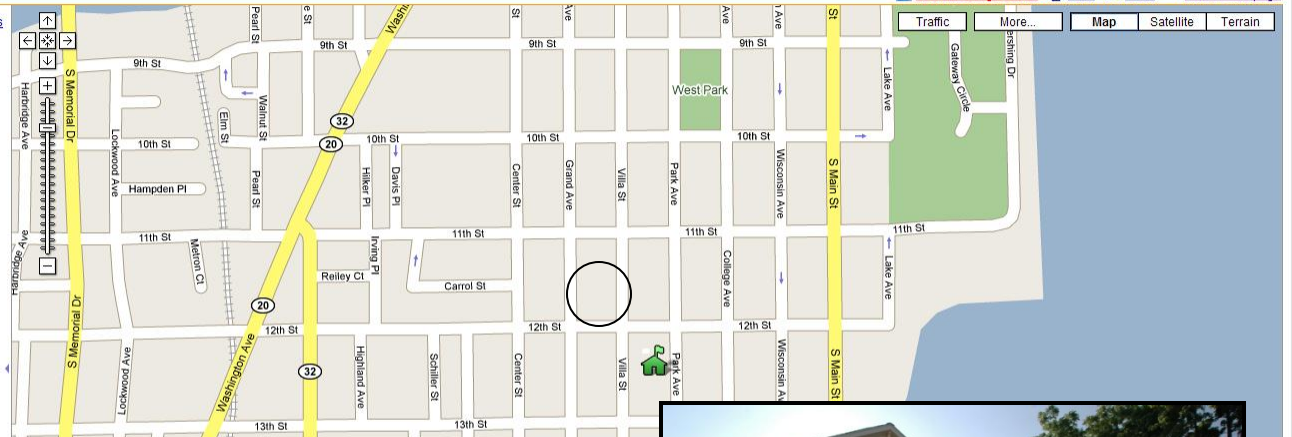
[Rate this map](#) - [Write a comment](#)



[St. Catherine's High School](#)

St. Catherine's High School 1200 Park Ave Racine, WI

Click GREEN SCHOOL ICON for directions



[View in Google Earth](#)

[Print](#)

[Send](#)

[Link to this page](#)

Traffic

More...

Map

Satellite

Terrain

Google Earth

File Edit View Tools Add Help

Search

Fly to Find Businesses Directions

Fly to e.g., 37° 25.818' N, 122° 05.36' W

Search

Places

My Places Add Content

My Places

St. Catherine's High School

Click on the green school icon below and select "To here" in the pop up.

St. Catherine's High School

Click on the green school icon below and select "To here" in the pop up.

St. Catherine's High School

Click on the green school icon below and select "To here" in the pop up.

St. Catherine's High School

Click on the green school icon below and select "To here" in the pop up.

St. Catherine's High School

Click on the green school icon below and select "To here" in the pop up.

St. Catherine's High School

Click on the green school icon below and select "To here" in the pop up.

St. Catherine's High School

Click on the green school icon below and select "To here" in the pop up.

St. Catherine's High School

Click on the green school icon below and select "To here" in the pop up.

St. Catherine's High School

Click on the green school icon below and select "To here" in the pop up.

St. Catherine's High School

Click on the green school icon below and select "To here" in the pop up.

St. Catherine's High School

Click on the green school icon below and select "To here" in the pop up.

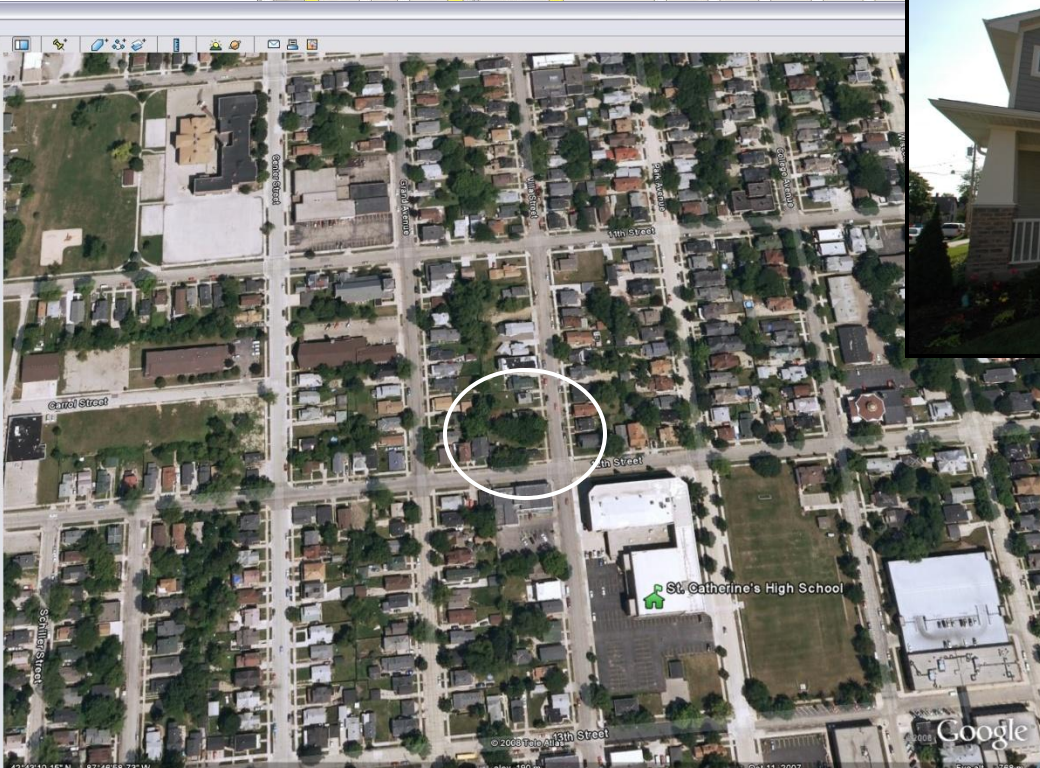
St. Catherine's High School

Click on the green school icon below and select "To here" in the pop up.

St. Catherine's High School

Click on the green school icon below and select "To here" in the pop up.

St. Catherine's High School



Thelma Orr
 Community
 Oriented
 Policing
 House
 1146 Villa Street
 Racine, WI

Special Greetings

Directed by:

Sergeant Bernard Kupper, Public Information Officer

Racine Mayor Gary Becker

City of Racine Police Chief Kurt S. Wahlen

**Community Outpost Board Member and Former Chief
Richard V. Polzin**

Thelma Orr Community Policing Officer Michael

Today we celebrate the opening of the Thelma Orr Community Policing House. It has taken a year of collaboration with The Racine Police Department, Community OutPost and Neighborhood Housing Services of Southeast Wisconsin, Inc. to design this Community Policing House. The team has collaborated to select an attractive house plan that would meet the needs of the C.O.P. house and later will be a home for a family.

The concept of a C.O.P. House is one of taking an area that needs some attention, placing the House and its' available services there, in hopes that there will follow a reduction in crime in that area. At the same time, the hope is that there develops enough confidence in the neighborhood that more investment by homeowners and landlords will follow; thereby improving the quality of life for the individual residents as well as the neighborhood as a whole. This program has been a success since its' inception in late 1993.



Original Lot





Visit of Milwaukee
Alderman Michael Murphy



















Community Meeting Room
(Garage)





Full IT Infrastructure



Saint Catherine's Catholic High School



Contact Information

- ▶ Community Outpost
 - David Voss – Cell 262.880.9640
 - Work Phone – 262.886.9612
- ▶ Racine Police Department
 - Steven Hurley
 - Assistant Police Chief
 - Racine Police Department
 - Cell 262.498.5751
 - Work Phone – 262.635.7712

